



BL Series

2,500 – 4,400 LUMEN
HIGH IMPACT LINEAR
LED LUMINAIRES



Webpage

Approved for use in general, marine & hazardous locations.

Essentials

Input voltage options: 120-277VAC or 347VAC*
Ingress protection: IP66 or IP68*
Ambient temperature range: -50°C to +65°C

Fixture lengths: 18.42" **
Fixture dimensions: 2.90 kg | 6.4 lbs **

* General location only

**Excluding mounts

Certifications

General & Marine Location

- UL 1598, UL 1598A, UL 8750
- CSA C22.2 No. 250.0, CSA C22.2 No. 250.13

Hazardous Location

- UL 844
- CSA C22.2 No.137

BL Safety Ratings

- Class I, Division 2, Groups ABCD
- Class II, Division 2, Groups FG
- Class III
- Class I, Zone 2, Group IIC
- Zone 21
- Zone 22

Warranty

- Five (5) year limited warranty

Features

- Lightweight replacement for conventional vapor-tight lights.
- Copper-free aluminum housing with polycarbonate or glass lens.
- Approved for through-wiring of multiple units on a single circuit.
- Built-in junction area for simplified termination.
- Triple layer corrosion protection.

BL light fixtures are industrial grade, lightweight, and suitable for challenging applications. Designed to replace vapor-tight fluorescent lights in general, marine, and hazardous environments. 7 versatile mounting options expand deployment locations for this product.

 **Nemalux**[™]
A Cooper Lighting Solutions business



1-877-636-2589
1-877-NEMALUX

info@nemalux.com
www.nemalux.com

 **MADE IN CANADA**

BL Series

Product Features

Junction Box

- Direct heat transfer from power supply to external case for optimal performance
- 3 x 3/4" NPT entries

Housing

- High-pressure die-cast, copper-free aluminum alloy
- Glare reducing polycarbonate or clear tempered glass lens
- Pressure equalization vent to reduce stress on electronics
- IP66 rated
- IP68 variant*

** Rated for use in general & marine locations. Fully sealed with an optically clear encapsulant and not field serviceable.*

LEDs

- High efficiency
- Superior CRI (90+)
- Several CCT options

Light Engine

- Metal core PCB (MCPCB) for improved thermal transfer
- Fault tolerant and fail-over design ensures reliability and resilience

Thermal Management

- Surface area ensures LEDs are kept running at maximum efficiency in temperatures up to 65°C
- Unique heat sink design creates increased airflow for optimal LED and power supply operating temperatures

Power Supplies

- 0-10V Dimmable



To inquire about products, discuss your needs or get a
no-obligation lighting layout from our experts, please contact us.

1-877-636-2589 | info@nemalux.com

MOUNTING OPTIONS (Order Separately)



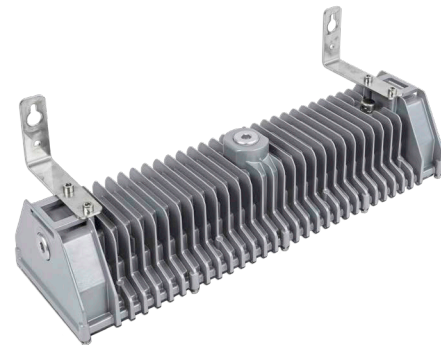
BL-HK
HOOK PENDANT MOUNT



BL-R-CC
PENDANT / CONDUIT MOUNT



BL-SM
SURFACE MOUNT



BL-WM
WALL MOUNT

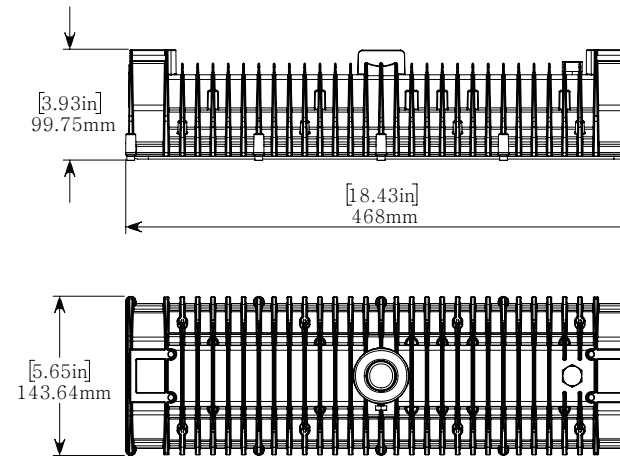


BL-YM
ADJUSTABLE YOKE MOUNT



BL-TC
TUBE CLAMP MOUNT

DIMENSIONS



IP68 ENCAPSULATED VARIANT (BL-EN)



An optically clear encapsulant creates a permanent seal for IP68 applications. Maintaining protection against the ingress of water to a depth of up to 25'.

WEBPAGE WITH TECHNICAL DETAILS



BL Webpage

Specification sheets & part number selector are located on the BL webpage.

TOP HAT RETROFIT ADAPTER



Converts legacy light fixture hoods & upgrades them to an optimized Nemalux LED luminaire.

REQUEST INFORMATION



Contact us

Copyright© 2025 Nemalux LED Lighting, Rev. A3
Due to constant product development, details in this brochure are
subject to change at any time. Contact us for the latest information.