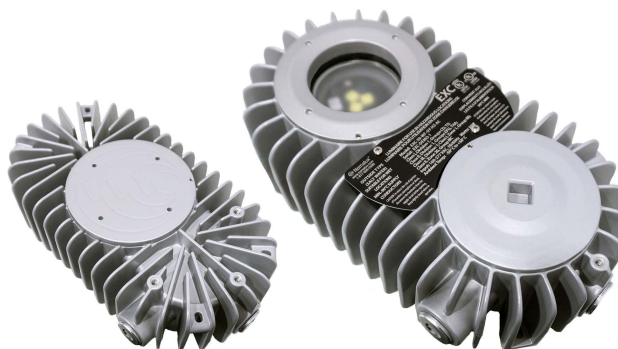


KEY FEATURES

- Class I Division 1, Explosion-proof luminaire designed for confined space and low clearance applications
- Copper-free, marine-grade aluminum housing with glass lens
- No arcing, sparking, or hazardous temperature components
- Tested to withstand more than 2,500 psi internal pressure
- Built-in junction box with 3/4" NPT entries on three sides
- Thermally managed for maximum longevity

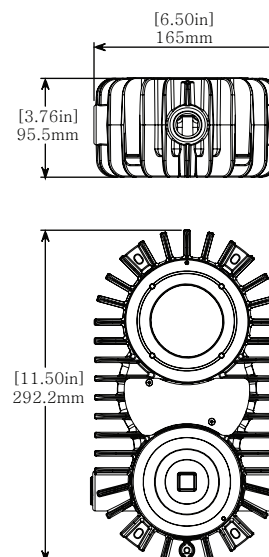


TECHNICAL SPECIFICATIONS / MAXIMUM RATINGS

HOUSING	Copper Free Aluminium with Tempered Glass Lens
MOUNTING	4x #10 Screws, Surface Mount See Page 2 for MOUNTING OPTIONS
INPUT VOLTAGE	AC: 120-277VAC (50/60Hz) DC: 22-28VDC
RATED POWER	AC: 30W DC: 35W
CURRENT (TYP)	AC: 0.2A @ 120VAC DC: 1.1A @ 24VDC
CONNECTIONS	3x 3/4" NPT
DIMMING	Can be dimmed via supply pulse modulation
TEMPERATURE RANGE	-50°C to +58°C (Case ~20°C above ambient)
CERTIFICATIONS	Certified to UL 1598 CSA C22.2 No. 250.0, UL 8750 CSA C22.2 No. 250.13, UL 844 CSA C22.2 No. 137; Class I, Division 1, Groups CD T5; Class II, Division 1, Groups EFG T4A; Class III, Division 1; Class I, Zone 1, Group IIB; Class II, Zone 20, Group IIIC
INGRESS PROTECTION	IP66
COLOUR TEMP RANGE	50: 5000K Special Order: 2700-6500K
CRI VALUE (MIN)	50: 70 Special Order: 70-90
TOTAL LUMENS	1220 lm
ESTIMATED SYSTEM LIFE	120,000 hrs
WEIGHT	4.4 kg 9.8 lbs

*The ambient temperature during lifetime, lumen and chromaticity determination is 25°C ± 1°C.

DIMENSIONS

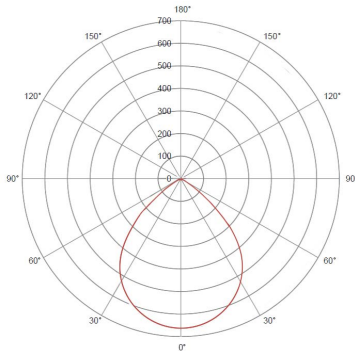


WARRANTY

Five (5) year limited warranty to the original purchaser. The warranty covers defects in materials and workmanship under normal use and service.

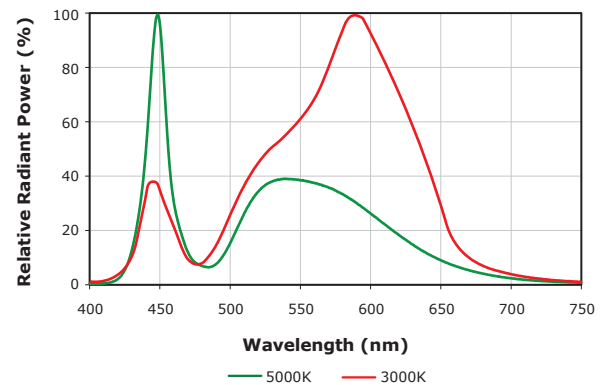
For additional information see:
<https://nemalux.com/legal>

OPTIC OPTIONS



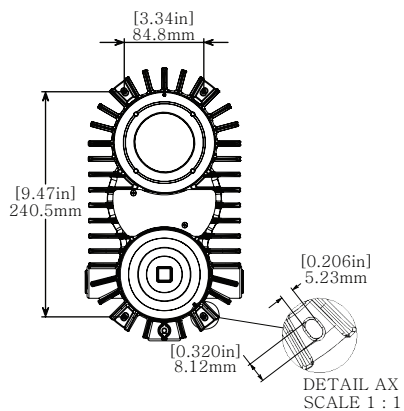
WF - Wide Beam (No Optics)
Approximately 90°

PHOTOMETRICS



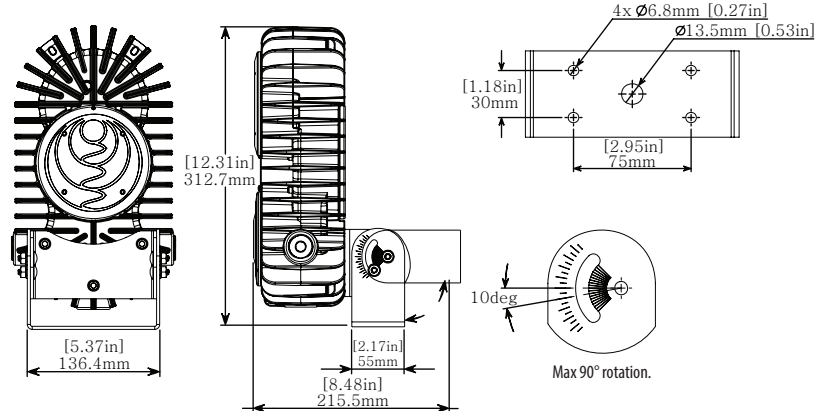
MOUNTING OPTIONS

SURFACE MOUNT : 4.4 kg | 9.8 lbs



Mounting tabs sized for M5 or #10 fasteners.

YOKE MOUNT (EXC-YM) : 5.3 kg | 11.6 lbs (Optional Accessory)



Mounting holes sized for M6 or 1/4" fasteners.



ORDERING INFORMATION

PROJECT NAME		TYPE
PROJECT LOCATION		
COMMENT		DATE
PREPARED BY		

MODEL SELECTOR

Sample Number: EXC-50-WF-GY-HZ-AC

MODEL	COLOUR	OPTIC	FINISH	LOCATION	POWER
EXC -	-	WF -	GY -	HZ -	
EXC	50 - 5000K Special Order: 27 - 2700K ¹ 30 - 3000K ¹ 27H - 2700K, 90CRI ¹ 30H - 3000K, 90CRI ¹ 35 - 3500K ¹ 35H - 3500K, 90CRI ¹ 40 - 4000K ¹ 40H - 4000K, 90CRI ¹ 50H - 5000K, 90CRI ¹ 57 - 5700K ¹ 57H - 5700K, 80CRI ¹ 65 - 6500K ¹ 65H - 6500K, 80CRI ¹	WF - Wide Frosted (No optics)	GY - Grey Custom finishes are available. Please contact for details. ¹	HZ - Hazardous Location	AC - 120-277VAC DC - 22-28VDC

ACCESSORIES (Order Separately)

Sample Number: EXC-YM

ACCESSORY
EXC-YM - Yoke Mount ²

NOTES:

1. Minimum order quantities, additional costs and lead times may apply.
2. Yoke mount is stainless steel.