

# EXC Performance Spec

## Class I Division 1 | Explosion Proof



### EXC Series - Performance Specification for Industrial Grade LED Luminaires

#### 1. Luminaire Housing and System Design

- 1.1. cULus listed to match the specific area rating.
- 1.2. Flexible mounting options to allow implementation of the luminaire category for a variety of applications.
- 1.3. Passes 7J impact exceeding IK08 requirements.
- 1.4. Copper-free, marine-grade aluminum housing.
- 1.5. Multi-layer powder-coated housing for chemical and UV resistance.
- 1.6. Impact, flame and UV resistant wide frosted glass lens.
- 1.7. Stainless steel fasteners.
- 1.8. Secondary fastening point for all overhead luminaires.
- 1.9. Ingress protection rating of IP66.
- 1.10. Low profile housing design.

#### 2. Light Emitting Diode Specification

- 2.1. Reported TM21 Lifetime data for L90 shall be greater than 120,000h based on typical junction point temperature at 25°C ambient temperature and typical drive current.
- 2.2. Correlated colour temperature shall be 5,000K (+/- 300K) for indoor and 3,000K (+/- 300K) for outdoor applications.
- 2.3. Minimum CRI value of 70 to provide accurate representation of colors and increased visual acuity.

### 3. Optical Control

- 3.1. 0% up light when the fixture is installed horizontally in reference to the ground, ensuring no light trespass above the horizontal plane.

### 4. Manufacturing

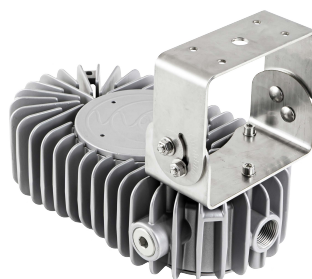
- 4.1. Manufacturer shall have no less than 10 years of experience in supplying industrial and hazardous location LED based luminaires.
- 4.2. The luminaire shall be manufactured in an ISO 9001:2015 certified facility in North America.
- 4.3. Project documentation and final packaging labels must match the luminaire types (where applicable) to support rapid deployment during the construction stage.

### 5. Warranty

- 5.1. The manufacturer shall provide a 5-year luminaire warranty, which shall include housing, light engine and power supply.
- 5.2. The warranty shall be tied to and tracked based on luminaire serial number and be transferable from the original purchaser to the final facility owner / operator.



Surface Mount (Built-in)



Yoke Mount (EXC-YM)