

LS Series Installation Manual

TEMPORARY STRINGER LIGHT



Webpage



Manual



APPLICATION

The LS is rated for indoor and outdoor use, addressing temporary lighting needs in industrial, marine, and hazardous locations. With an IP66/67 protection level, the versatile LS offers a lightweight solution during construction, operation, and maintenance.

Conforms to:	UL 844, UL 1088, CAN/ULC-S1088, UL 1598, UL 1598A: CSA 22.2 No.137
Hazardous Location Certification:	Class I, Division 2, Groups ABCD, T5; Class II, Division 1, Groups EFG, T5; Class III; Class I, Zone 2, Groups IIC; Class I, Zone 20, Groups IIIC
Housing:	Copper-free high pressure die-cast aluminum body & borosilicate glass lens.
Rated Voltage:	120 VAC , 50/60 Hz
Rated Power:	19.5W per module
Connections:	Standard: Black: Line White: Neutral Green: Ground
Temperature Range:	-50° C to +70° C
Ingress Protection:	IP66/67 Suitable for wet locations. Marine outside type (salt water).



WARNING

CAUTION: To avoid risk of fire, explosion, or electric shock, this product should be installed, inspected, and maintained by a qualified electrician in accordance with all applicable codes. Supply connector must be rated for location and zone of use.

ATTENTION: Pour réduire le risque d'inflammation des atmosphères dangereuses et à fin déviter les chocs électriques, ce produit doit être installé, inspecté, et entretenu par un électricien qualifié conformément à tous les codes applicables. Le connecteur d'alimentation doit être adapté à l'emplacement et à la zone d'utilisation.



WARNING

NOTE: For use only on GFCI protected circuits when installed with connector or plug.

VEUILLEZ NOTER: Utiliser seulement sur des prises protégées de disjoncteur-détecteur de fuite à la terre.



WARNING

CAUTION – To reduce the risk of electric shock do not connect or disconnect when wet.

ATTENTION: Pour réduire les dangers de choc électrique, ne pas brancher ou débrancher une fois mouillé.



WARNING

CAUTION: To reduce the risk of ignition of hazardous atmospheres, disconnect the luminaire from the supply circuit before opening. Keep tightly closed when in operation.

ATTENTION: Pour réduire le risque d'inflammation des atmosphères dangereuses, débranchez le luminaire du circuit électrique avant d'ouvrir. Conserver hermétiquement fermé lorsqu'il est en fonctionnement.

PRE-ASSEMBLED TEMPORARY STRING LIGHTS

Refer to alternate instructions for LS-KIT

A qualified electrician must wire, install, and maintain this product.

Refer to CEC/NEC codes and follow all local standards applicable to the installation area.

Make electrical connections in a listed/recognized junction box (not provided) or listed/recognized connector approved for a minimum of 120VAC/8A. If the temporary lighting string is connected inside a classified (hazardous) zone, the connector must be rated for the hazardous Class and Division/Zone where the connection is made.

If the temporary lighting string is installed in a wet location, the junction box or connector must be listed and recognized for use in wet locations.

INSTALLATION STEPS

STEP 1.

Inspect shipping package and contents to ensure no damage has occurred during shipping.

STEP 2 (Optional).

Attach Surface mount accessory using supplied M4 screws (2). Torque fasteners to 20 in.-lbs (2.3 N-m) or use a strap/stainless steel clamp to fasten the fixture to the desired location.

STEP 3.

If the product was not ordered with a pre-installed connector, install a suitable UL/CSA listed or recognized connector for the environment and zone where the electrical connection will be made, or connect wiring leads to a listed junction box ideal for the environment and zone of use.

Ordinary location plugs may be used only if the electrical connection to power is made outside all hazardous environments or classified zones. Inside hazardous classified zones, connections to electrical power will be made only to UL/CSA listed or recognized connectors rated for the environment, Class/Division or Zone, temperature, and hazardous gas or dust group present may be used.

STEP 4.

For raised installations, attach the light stringer to fixed infrastructure (handrail, exposed beams, pipe rack, etc.) in the desired location with adjustable strapping, hook, or surface mount bracket accessories. Cam buckle straps, stainless steel mounting clamps, hook mounts, and surface mounts are available separately.

NOTE:

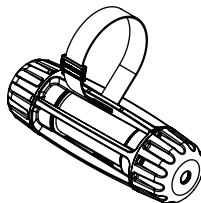
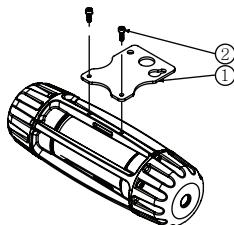
To replace a damaged cord, refer to the instructions on pages 3-4 for assembling the LS-KIT into an approved temporary string light.

STEP 5.

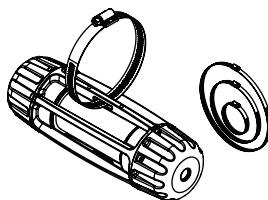
Plug-in or energize circuit.



Step 2



STAINLESS STEEL STRAP ACCESSORIES
ARE AVAILABLE IF REQUIRED





WARNING

CAUTION: To avoid risk of fire, explosion, or electric shock, this product should be installed, inspected, and maintained by a qualified electrician in accordance with all applicable codes. Supply connector must be rated for location and zone of use.

ATTENTION: Pour réduire le risque d'inflammation des atmosphères dangereuses et à fin éviter les chocs électriques, ce produit doit être installé, inspecté, et entretenu par un électricien qualifié conformément à tous les codes applicables. Le connecteur d'alimentation doit être adapté à l'emplacement et à la zone d'utilisation.



WARNING

NOTE: For use only on GFCI protected circuits when installed with connector or plug.

VEUILLEZ NOTER: Utiliser seulement sur des prises protégées de disjoncteur-détecteur de fuite à la terre



WARNING

CAUTION – To reduce the risk of electric shock do not connect or disconnect when wet.

ATTENTION: Pour réduire les dangers de choc électrique, ne pas brancher ou débrancher une fois mouillé.



WARNING

CAUTION: To reduce the risk of ignition of hazardous atmospheres, disconnect the luminaire from the supply circuit before opening. Keep tightly closed when in operation.

ATTENTION: Pour réduire le risque d' inflammation des atmosphères dangereuses, débranchez le luminaire du circuit électrique avant d'ouvrir. Conserver hermétiquement fermé lorsqu'il est en fonctionnement.

ASSEMBLY OF LS-KIT INTO APPROVED TEMPORARY STRING LIGHT

Refer to alternate instructions for Pre-assembled Temporary String Lights

A qualified electrician must wire, install, and maintain this product.

Refer to CEC/NEC codes and follow all local standards applicable to the installation area.

Make electrical connections in a listed/recognized junction box (not provided) or listed/recognized connector approved for a minimum of 120VAC/8A. If the temporary lighting string is connected inside a classified (hazardous) zone, the connector must be rated for the hazardous Class and Division/Zone where the connection is made.

INSTALLATION STEPS

STEP 1.

Inspect shipping package and contents to ensure no damage has occurred during shipping.

STEP 2.

Strip 95mm (3.75in) of cable jacket and trim back any filler. Strip conductor insulation 10mm (0.39in) from ends. Feed the wire through the end cap, rubber gland, and gland cap. Install a cord clamp and tighten it to 20 in-lbs (2.3 N-m) so that the cable jacket protrudes 5mm past the end of the cord clamp.

Slide together end cap, rubber gland, and gland cap assembly before fastening with three M4 socket head cap screws torqued to 20 in-lbs (2.3 N-m).

NOTE:

The electrical cord used must be a 14-Gauge/3-Conductor 500W with an outer diameter between 13mm [0.51"] and 14.2mm [0.56"]. The 500W cord must be rated for 600V/105°C or higher.

Maximum string length must not exceed 300 ft.

A maximum number of lighting modules must not exceed 30 units on a single string.

STEP 3.

Connect each conductor to the appropriate connectors.

STEP 4.

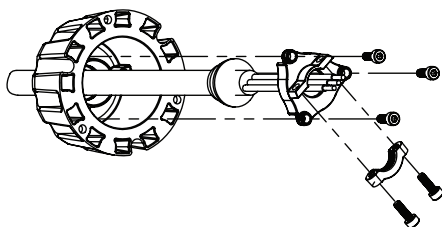
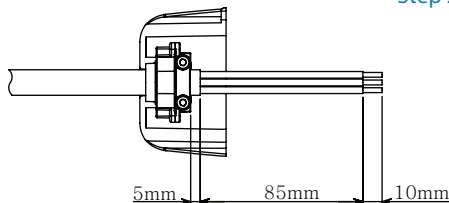
Wrap the excess conductor inside the cap and gently rotate to compress the wires (without pinching them) until the assembly holes align with the core and the internal wires are not strained or pinched.

Attach end cap assembly to the core with the supplied M4 socket head cap screws (3) with M4 hex driver torque to 2.3 N-m (20 in-lbs).

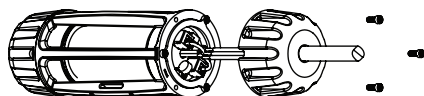
STEP 5.

Repeat steps 2-4 for the other side of the module.

Step 2



Step 4



INSTALLATION STEPS CONT.

STEP 6.

The final module must have the blank end plugged in to maintain ingress protection. The cord clamp and gland cap are assembled on the end module using two M4 fasteners and torque to 20 in-lbs (2.3 N-m). Install rubber gland, gland cap assembly, and cylindrical plug into the un-wired end-cap and torque M4 fasteners to 20 in-lbs (2.3 N-m) to secure in place and compress gland seal around the cylindrical plug.

Attach end cap assembly to the core with the supplied M4 socket head cap screws (3) with M4 hex driver torque to 2.3 N-m (20 in-lbs).

STEP 7.

Attach the mounting accessory if used (refer to Step 2 in LS installation).

STEP 8.

Install suitable UL/CSA listed or recognized connector for the environment and zone where the electrical connection will be made or connect wiring leads to a listed junction box suitable for the environment and zone of use. Ordinary location plugs may be used only if the electrical connection to power is made outside all hazardous environments or classified zones. Inside hazardous classified zones, connections to electrical power will be made only to UL/CSA listed or recognized connectors rated for the environment, Class/Division or Zone, temperature, and hazardous gas or dust group present may be used.

STEP 9.

For raised installations, attach the light stringer to fixed infrastructure (handrail, exposed beams, pipe rack, etc.) in the desired location with adjustable strapping, hook, or surface-mount bracket accessories. Cam buckle straps, stainless steel mounting clamps, hooks and surface mounts are available separately.

