



NL Series

4,000 – 14,000 LUMEN
HIGH OUTPUT LINEAR
2 LENGTHS



Webpage

Approved for use in marine, harsh & hazardous locations

Essentials

Input voltage options: 120-277VAC or 347-480VAC
Ingress protection: IP66
Ambient temperature range: -40°C to +55°C

Fixture weight: NL-2: 12.0 lbs | NL-4: 19.0 lbs*
Fixture lengths: NL-2: 27.3" | NL-4: 50.8"*

**Excluding mounts*

Certifications

Certified for general & marine location use under:

- UL 1598, UL 1598A, UL 8750
- CSA C22.2 No. 250.0, CSA C22.2 No. 250.13

Certified for hazardous locations use under

- UL 844
- CSA C22.2 No. 137

Hazardous Location Ratings are:

- Class I, Division 2, Groups ABCD
- Class II, Division 2, Groups FG
- Class III
- Class I, Zone 2, Group IIC
- Class I, Zone 22, Groups IIIB

Warranty

- Five (5) year limited warranty

Features

- High-output linear LED replacement for legacy vapor-tight lights.
- Copper-free, extruded aluminum housing with polycarbonate lens.
- Approved for through-wiring of multiple units on a single circuit.
- Angle adjustable mounting bracket allows for 360° rotation.
- Built-in junction area for simplified termination.

Nemalux NL fixtures are durable and robust linear luminaires. Designed to replace fluorescent fixtures in industrial and tunnel applications. The NL is available in 2' and 4' lengths and can be surface-mounted or suspended from a ceiling. Light output for the 4ft version with general location certification can be as high as 14,000 lumens. Several light output packages are available due to programmable power supplies.

 **Nemalux**[™]
A Cooper Lighting Solutions business



1-877-636-2589
1-877-NEMALUX

info@nemalux.com
www.nemalux.com

 MADE IN CANADA

NL Series

Product Features

Power Supplies

- Two input power ranges for flexibility
- Over voltage, over temperature and short circuit protection
- Built in JB with 3/4" NPT entry for electrical termination within central cavity
- Battery backup available on general location models for emergency lighting
- Transient/surge protection: IEEE C62.41

Light Engine

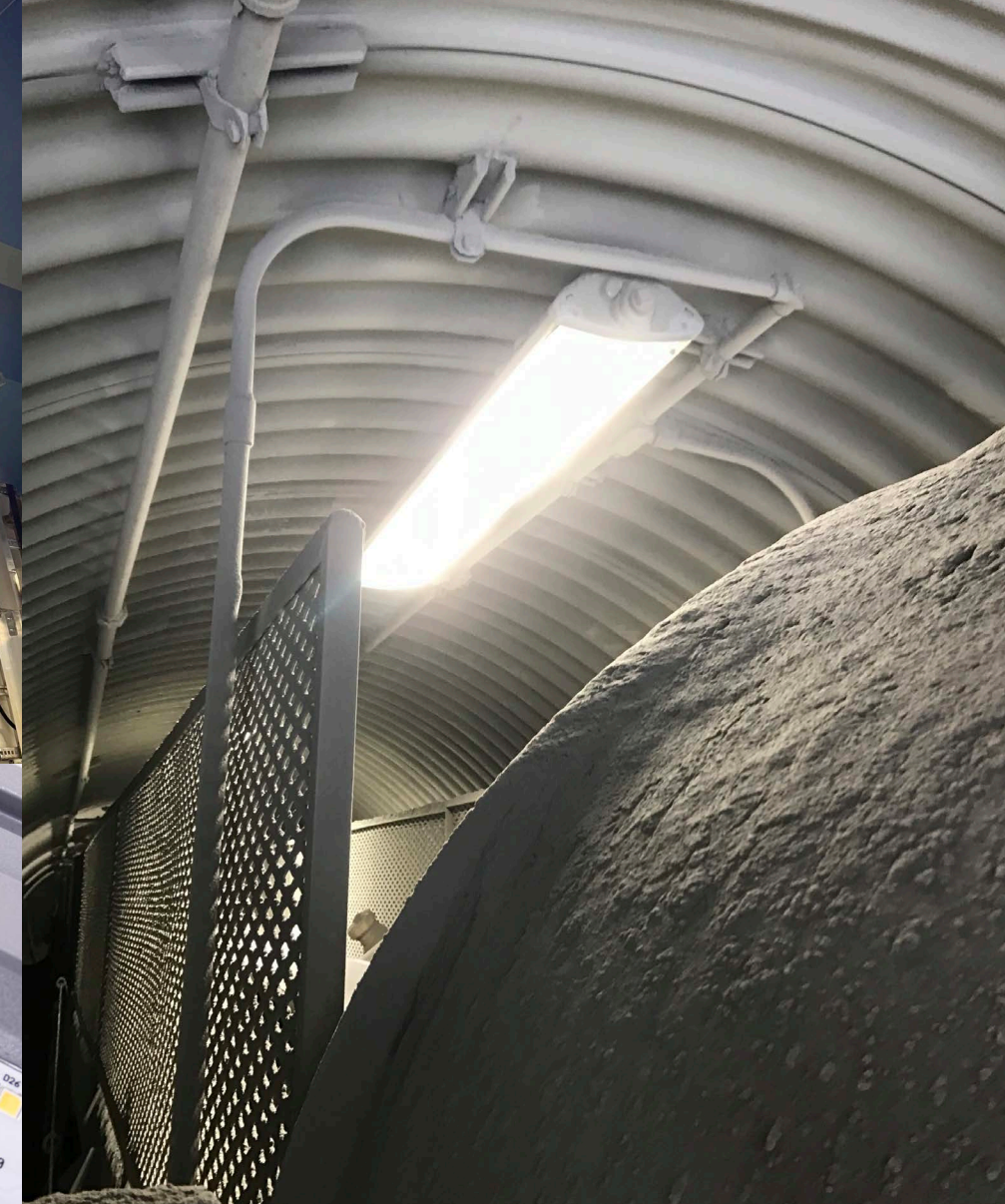
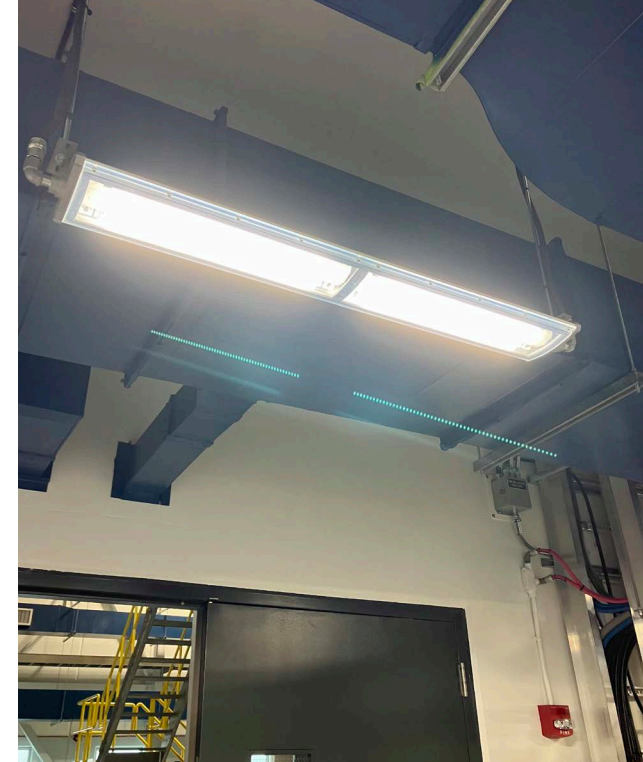
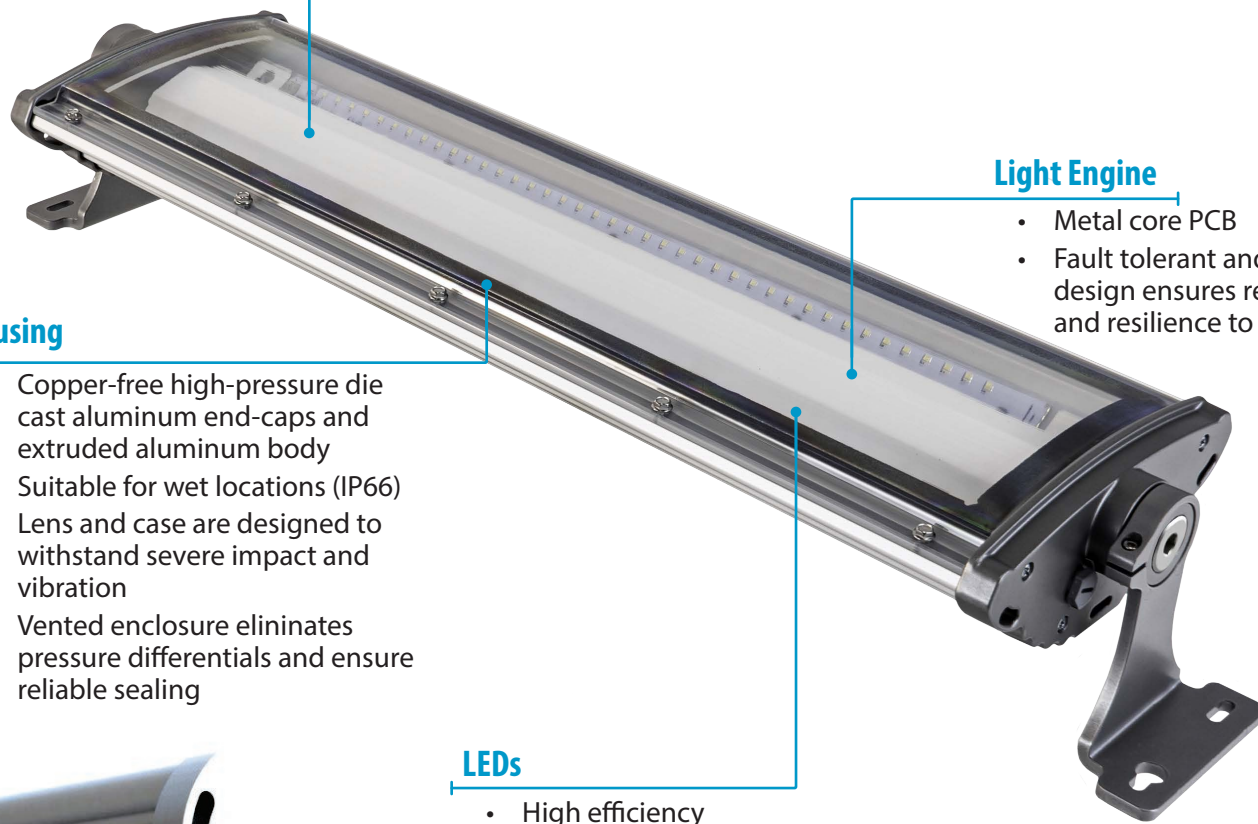
- Metal core PCB
- Fault tolerant and fail-over design ensures reliability and resilience to damage

Housing

- Copper-free high-pressure die cast aluminum end-caps and extruded aluminum body
- Suitable for wet locations (IP66)
- Lens and case are designed to withstand severe impact and vibration
- Vented enclosure eliminates pressure differentials and ensure reliable sealing

LEDs

- High efficiency
- High CRI (70+)
- Several CCT options



MOUNTING OPTIONS (Order Separately)



NL2
SUSPENDED MOUNT (BUILT IN)



NL4
SUSPENDED MOUNT (BUILT IN)



NL2
SURFACE MOUNT



NL4
SURFACE MOUNT



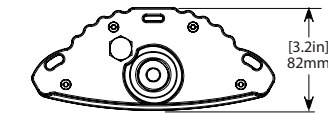
NL2
ANGLE ADJUSTABLE MOUNT



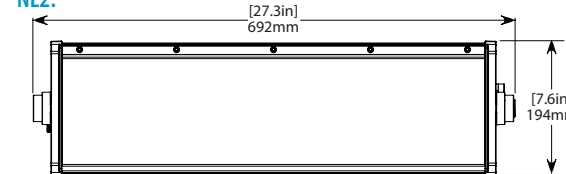
NL4
ANGLE ADJUSTABLE MOUNT



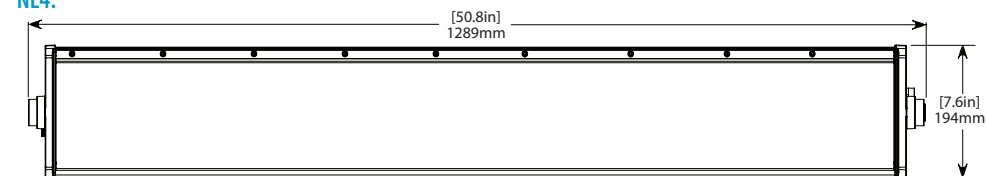
DIMENSIONS



NL2:



NL4:



WEBPAGE WITH TECHNICAL DETAILS



NL Webpage

Specification sheets & part number selector are located on the NL webpage.

REQUEST INFORMATION



Contact us