



## RF SERIES

### MOUNTING & ACCESSORIES GUIDE

Bulkhead | Flood

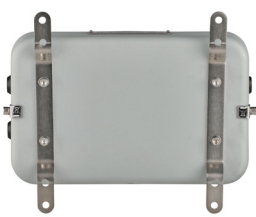
This guide covers the different mounting options and accessories available for your RF Bulkhead and Flood\* luminaires. NEMALUX provide a range of dedicated bracket solutions available to suit multiple wall, floor, ceiling, and pole mount configurations, along with bespoke lens options and protective kits.

We have separated the guide into four parts to help you identify your bracketry requirements.

1. Bulkhead & Flood – for use with both RF Bulkhead and RF Flood luminaires
2. Bulkhead Only – for use with RF Bulkhead luminaires
3. Flood Only – for use with RF Flood luminaires
4. Appendix – dimension sketches

## Standard Mounting

RF Bulkhead and Flood luminaires are supplied together with standard bracketry solutions.



RF2K4 Bulkhead



### Bulkhead

With standard bracketry, RF Bulkhead luminaires are designed to mount to any flat surface, both ceiling and wall. Provided in a pair, two low-profile stainless-steel ceiling/wall mounting brackets are supplied together with the unit and will screw easily to the back of the Bulkhead housing.



RF2K4 Flood



### Flood

RF Flood is supplied with a stirrup bracket as standard. The bracket can be attached in the top or bottom position depending on the mounting application. A locking screw is provided to lock the luminaire at various angles, the unit can be mounted horizontally or vertically allowing the unit to point up/down or left/right.

\*Excludes High Power Flood variants.



### Sandblast Shield Kit

RF-BKT-SB

The RF Sand Blast Shield Kit provides a clear polycarbonate front cover for your Flood or Bulkhead luminaire. It screws easily to the front to protect the lens from damage in sand and shot blasting applications.



### Front Guard

RF-WG-FL12 (FL12 only)

RF-WG-FL24 (FL24, FL48 (2 required) and Bulkhead)

The RF Front Guard is a stainless-steel grid plate. Already resistant to high impact, the front guard provides additional luminaire protection for environments of extreme mechanical impact. The grid plate can be fitted directly to the front of the luminaire, designed so as not to obstruct light output.



### Protective Film

RF-BKT-PF12 (FL12 only)

RF-BKT-PF24 (FL24, FL48 (2 required) and Bulkhead)

RF Protective Film comes in a pack of 10. The films adhere to and protect the luminaire front lens within applications involving paint or with high dirt/dust levels.

All fixings provided.



MADE IN UK

[www.nemalux.com](http://www.nemalux.com)

[sales@nemalux.com](mailto:sales@nemalux.com)

Tel 403-242-7475

Fax 403-243-6190

SUBJECT TO CHANGE WITHOUT NOTICE



## Vario Diffuser

RF-DIF12-XXXX (FL12 only)

RF-DIF24-XXXX (FL24, FL48 (2 required) and Bulkhead)

(Select beam pattern below to replace 'XXXX')

### Beam Patterns

120120, 3510, 6025, 8035, 12050

The VARIO Diffusers provide a range of different beam shapes and angles, using Nemalux's unique beam shaping technology to produce a highly even and targeted elliptical spread of light – perfect for walkway applications or long/narrow spaces. With the outer luminaire cover removed, the diffuser – held within a mounting plate provided – is screwed to the inside of the front glass panel (replace the outer cover). The Vario Diffuser has 5 different angle options available including 120x120, 35x10, 60x25, 80x35 and 120x50.

All fixings provided.



MADE IN UK

[www.nemalux.com](http://www.nemalux.com)

[sales@nemalux.com](mailto:sales@nemalux.com)

Tel 403-242-7475

Fax 403-243-6190

SUBJECT TO CHANGE WITHOUT NOTICE



### Swivel Bracket Mounting Kit

RF-BKT-SW

RF-BKT-SWS (short)

The RF Swivel Bracket Mounting Kit is designed for ceiling and wall mounting of all RF Bulkhead luminaires. Typically mounted to the Flush Back Plate, 1 bracket is required for an individual Bulkhead unit. There is the facility to rotate the fitting through various angles to suit any application. The stainless-steel bracket provides lock-in holes every 30° and 45°. Shorter length variants are available providing part-rotation for restricted space applications.



### Emergency Exit Sign Kit

RF-BKT-EE1

The RF Emergency Exit Sign Kit is designed to convert the Bulkhead unit into an exit sign luminaire. Adhesive universal exit legends (with various options\*) place onto a clear polycarbonate front panel with stainless steel mounts, which screws to the front of the luminaire. The Exit Sign Kit allows up to 48 different combinations during installation.

\*Other designs available – contact Nemalux for more information.



### Floor Mount

RF-BKT-BFL (Portrait)

RF-BKT-BFLH (Landscape)

The RF Floor Mount is designed to mount RF Bulkhead to a flat floor surface. The dedicated stainless-steel bracket offers both portrait and landscape orientations.

All fixings provided.



MADE IN UK

[www.nemalux.com](http://www.nemalux.com)

[sales@nemalux.com](mailto:sales@nemalux.com)

Tel 403-242-7475

Fax 403-243-6190

SUBJECT TO CHANGE WITHOUT NOTICE



### Flush Rear Mount

RF-BKT-BFRM

The RF Flush Rear Mount Plate is designed to mount RF Bulkhead luminaires flush to any flat wall surface.



### Flush Back Plate

RF-BKT-BFBP

The RF Flush Back Plate is a dedicated conversion bracket for the RF Bulkhead. It provides a stainless-steel mounting plate and suitable holes to accommodate the 'Swivel Mount Bracket' to the RF Bulkhead.



### 30° Bracket

RF-BKT-BH30

The RF 30° bracket is designed to mount RF Bulkhead luminaires to any flat wall surface and provide a 30° fixed angle of illumination.

All fixings provided.



MADE IN UK

[www.nemalux.com](http://www.nemalux.com)

[sales@nemalux.com](mailto:sales@nemalux.com)

Tel 403-242-7475

Fax 403-243-6190

SUBJECT TO CHANGE WITHOUT NOTICE



### Pole Mount Bracket Kit

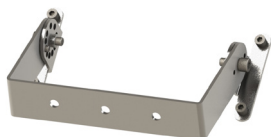
RF-BKT-BPC28 (28mm)  
RF-BKT-BPC33 (33mm)  
RF-BKT-BPC42 (42mm)  
RF-BKT-BPC48 (48mm)  
RF-BKT-BPC60 (60mm)

The RF Pole Mount Bracket Kit includes a pair of dedicated brackets which easily screw to the back of the Bulkhead unit and combines with a pair of stainless-steel circular pole clamps, with adjustable side-bolts to open and clamp around a single pole. Kits to suit poles up to 60mm in diameter are available.



### Spigot Mount Bracket

The RF Spigot Mount is designed to allow the Bulkhead unit to be used for pole mount applications. The Bulkhead unit will need to be ordered specifically for these applications as the main body has a different drilling pattern to allow the spigot to attach. Available in three sizes. Contact Nemalux for part codes.



### Stirrups Bracket

RF-BKT-BLST

The RF Bulkhead Stirrup Bracket delivers maximum light where it is needed most. The dedicated bracket allows precise tilt and positioning of light into the required space.

All fixings provided.



MADE IN UK

[www.nemalux.com](http://www.nemalux.com)

[sales@nemalux.com](mailto:sales@nemalux.com)

Tel 403-242-7475

Fax 403-243-6190

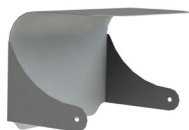
SUBJECT TO CHANGE WITHOUT NOTICE



#### Pole Mounting Kit

PBC1-RF

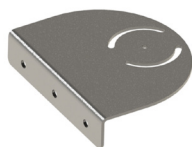
The RF Pole Mounting Kit is designed to vertically pole mount RF Flood luminaires. Its dedicated stainless-steel plate provides a platform to attach the Flood U bracket to, and mounting clips attach and tighten the plate to your pole. Suitable for Flood luminaires up to size RF24.



#### Sunshield

RF-BKT-SUN

The RF Sunshield is designed to mount to the RF24 luminaire to provide additional protection in high temperature applications. It shields the luminaire in situations where it may be subject to the effects of direct sunlight on the luminaire body.



#### 180° Wall Mount Bracket

RF-BKT-180

The RF 180° Wall Mount Bracket is designed to mount RF Flood luminaires to any flat wall surface and provide 180° horizontal rotation. Suitable for Flood luminaires up to size RF24.

All fixings provided.



MADE IN UK

[www.nemalux.com](http://www.nemalux.com)

[sales@nemalux.com](mailto:sales@nemalux.com)

Tel 403-242-7475

Fax 403-243-6190

SUBJECT TO CHANGE WITHOUT NOTICE





### Retention Cord Kit

RF-BKT-SCF500 (500mm)

RF-BKT-SCF1000 (1000mm)

RF-BKT-SCF1500 (1500mm)

The RF Retention Cord Kit is a stainless-steel cord and carabineer, which attaches to a retention bracket which can be easily screwed into the back of the luminaire. This provides an additional safety tether for height-critical applications. The kit is available in 500mm, 1000mm and 1500mm variants.



### Magnetic Mounting Kit

RF-BKT-MAG

The RF Magnetic Mounting Kit provides two magnetic discs which easily screw to the back of the fitting, and conveniently and securely attach it to any flat metal surface.

All fixings provided.

Can't find what you need?

We pride ourselves on flexibility and being able to meet the many demands of our customers. If you have a special requirement, and can't see a solution which is suitable, give us a call and chat to one of our experts to discuss how we can help.



MADE IN UK

[www.nemalux.com](http://www.nemalux.com)

[sales@nemalux.com](mailto:sales@nemalux.com)

Tel 403-242-7475

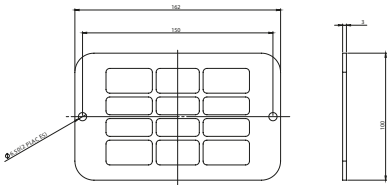
Fax 403-243-6190

SUBJECT TO CHANGE WITHOUT NOTICE

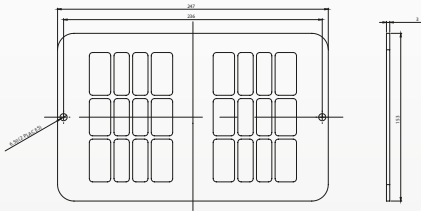
2. BULKHEAD ONLY OPTIONS

Front Guard

RF-WG-RF12 (FL12 only)

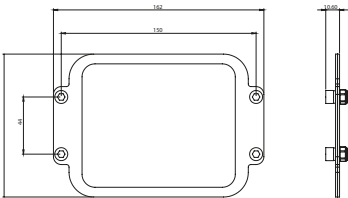


RF-WG-RF24 (RF24, RF48  
(2 required) and Bulkhead)

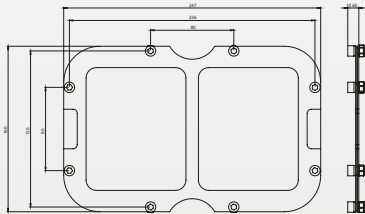


Vario Diffuser

RF-DIF12-XXXX (RF12 only)



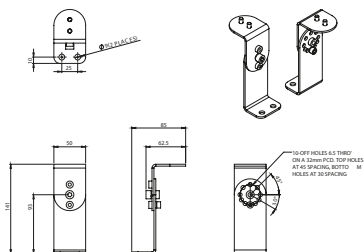
RF-DIF24-XXXX (RF24, RF48  
(2 required) and Bulkhead)



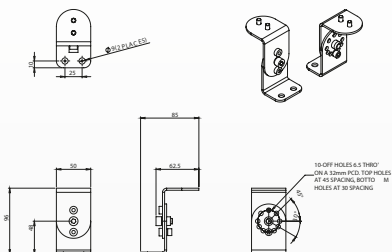
## 2. BULKHEAD ONLY OPTIONS

### Swivel Bracket Mounting Kit

RF-BKT-SW

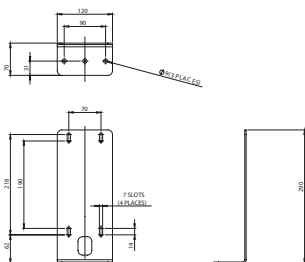


RF-BKT-SWS (short)

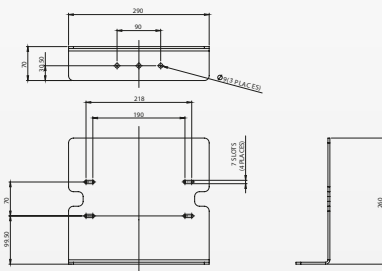


### Floor Mount

RF-BKT-BFL (Portrait)

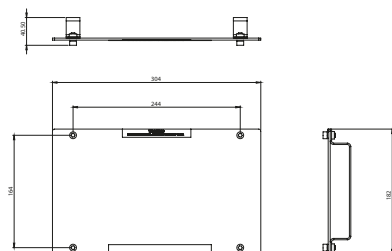


RF-BKT-BFLH (Landscape)



### Emergency Exit Sign Kit

RF-BKT-EE1



MADE IN UK

[www.nemalux.com](http://www.nemalux.com)

[sales@nemalux.com](mailto:sales@nemalux.com)

Tel 403-242-7475

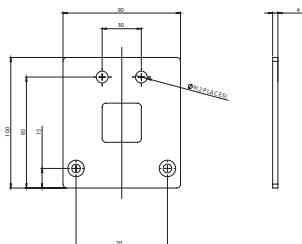
Fax 403-243-6190

SUBJECT TO CHANGE WITHOUT NOTICE

11-15

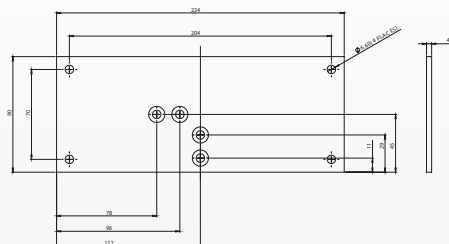
### Flush Rear Mount

RF-BKT-BFRM



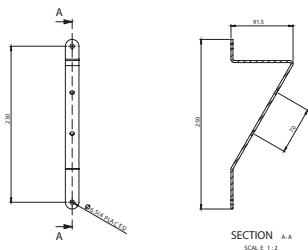
### Flush Back Plate

RF-BKT-BFBP



### 30° Bracket

RF-BKT-BH30



MADE IN UK

[www.nemalux.com](http://www.nemalux.com)

[sales@nemalux.com](mailto:sales@nemalux.com)

Tel 403-242-7475

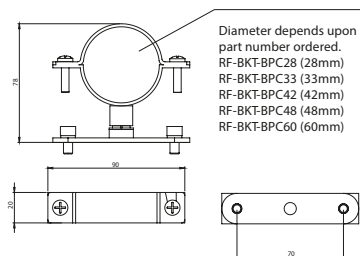
Fax 403-243-6190

SUBJECT TO CHANGE WITHOUT NOTICE

12-15

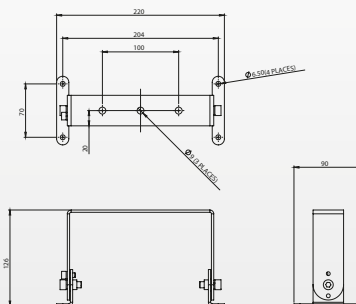
### Pole Mount Bracket Kit

RF-BKT-BPCXX



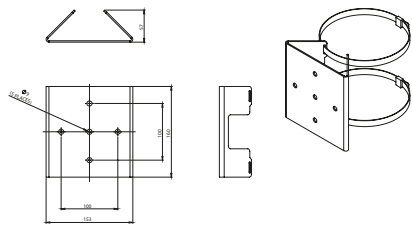
### Stirrurp Bracket

RF-BKT-BLST



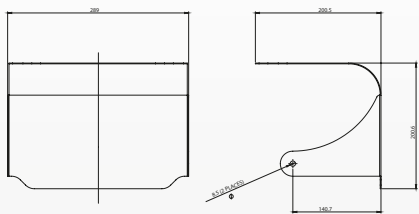
Pole Mounting Kit

PBC1-RF



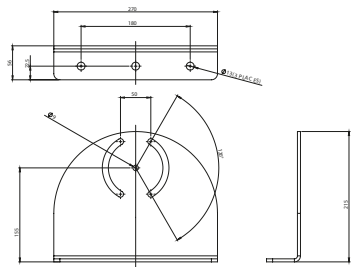
Sunshield

RF-BKT-SUN



180° Wall Mount Bracket

RF-BKT-180





Industrial LED Lighting designed to solve  
harsh and hazardous lighting challenges.

1881 - 120th Ave NE | Calgary, AB, Canada T3K 0S5

Toll Free: 1-877-NEMALUX / 1-877-636-2589

P: 1.403.242.7475

F: 1.403.243.6190

E: [info@nemalux.com](mailto:info@nemalux.com)

W: [www.nemalux.com](http://www.nemalux.com)



MADE IN UK

[www.nemalux.com](http://www.nemalux.com) |

[sales@nemalux.com](mailto:sales@nemalux.com) |

Tel 403-242-7475 |

Fax 403-243-6190

SUBJECT TO CHANGE WITHOUT NOTICE

15-15