

KEY FEATURES

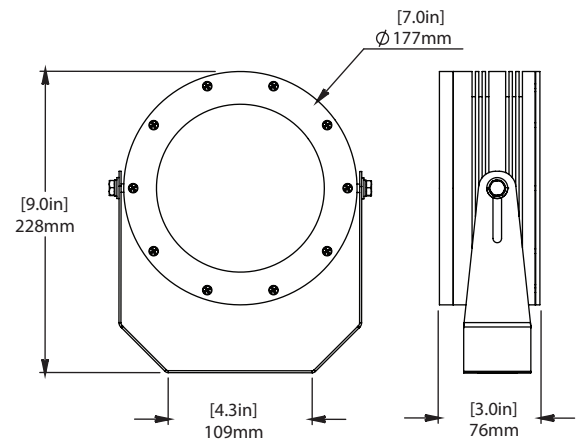
- Robust construction suitable for indoor and outdoor applications
- Available with a 6ft pre-wired or quick disconnect cable
- Available with 100° flood or 30° narrow beam profile
- Designed for use in harsh and hazardous locations
- Thermally managed for maximum longevity



TECHNICAL SPECIFICATIONS / MAXIMUM RATINGS

HOUSING	Anodized Aluminum
MOUNTING	Stainless Steel Yoke
VOLTAGE MAXIMUM	28 VDC
INPUT VOLTAGE	12-24 VDC
POWER (TYP)	31.6W @ 12 VDC 33.6 W @ 24 VDC
CURRENT (TYP)	2.64 A @ 12VDC 1.4 A @ 24 VDC
CONNECTIONS	1.8 m 6ft flying lead (Custom lengths available)
TEMPERATURE RANGE	-40°C to +45°C (Case ~20°C above ambient)
CERTIFICATIONS	Conforms to UL 2108 Standard Certified to CSA 22.2 No. 250.0
INGRESS PROTECTION	IP66
COLOUR TEMP RANGE	50: 5000K Special Order: 2700-6500K
CRI VALUE (MIN)	50: 70
TOTAL LUMENS	50-W: 1996
LUMEN MAINTENANCE	LM-80 > 60,500 hrs (Based on CREE long term testing)
WEIGHT	2.05 kg 4.5 lbs

DIMENSIONS



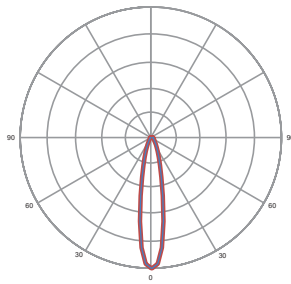
WARRANTY

Five (5) year limited warranty to the original purchaser. The warranty covers defects in materials and workmanship under normal use and service.

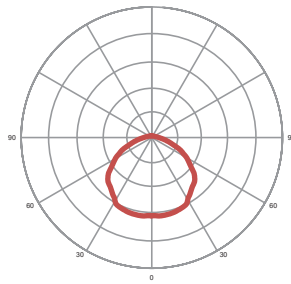
For additional information see: <https://nemalux.com/legal>

*The ambient temperature during lifetime, lumen and chromaticity determination is 25°C ± 1°C.

OPTIC OPTIONS



N - Narrow

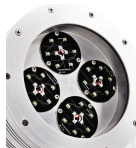


W - Wide

NARROW BEAM



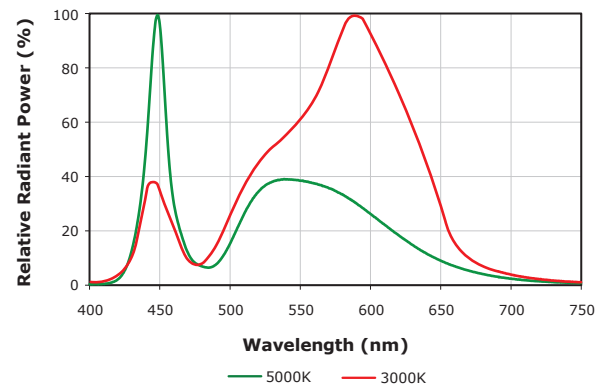
WIDE BEAM



FROSTED LENS

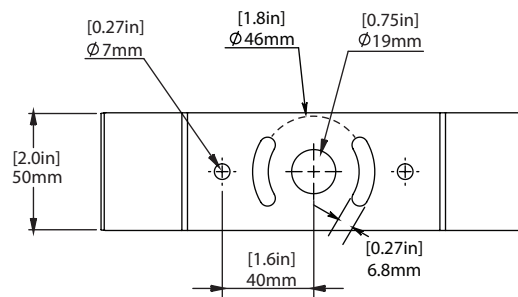
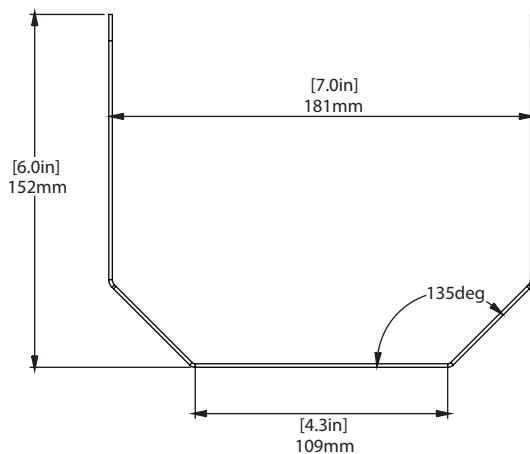


PHOTOMETRICS



MOUNTING

MOUNTING BRACKET



ORDERING INFORMATION

PROJECT NAME		TYPE
PROJECT LOCATION		
COMMENT		DATE
PREPARED BY		

MODEL SELECTOR

Sample Number: XCANLEDDC-50-WF-ALU-GEN

MODEL	COLOUR	OPTIC	FINISH	LOCATION
XCANLEDDC -	-	-	ALU	GEN
	50 - Cool White (5000K) Special Order: 27 - 2700K ¹ 30 - 3000K ¹ 35 - 3500K ¹ 40 - 4000K ¹ 45 - 4500K ¹ 50 - 5000K ¹ 55 - 5500K ¹	W - Wide WF - Wide Frosted N - Narrow NF - Narrow Frosted	ALU - Clear Anodized Custom finishes are available. Please contact for details. ¹	GEN - General Location

CUSTOM OPTIONS

WIRING

Other wire lengths available in 30 cm (1 ft) increments.¹

NOTES:

1. Minimum order quantities, additional costs and lead times may apply.